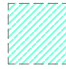

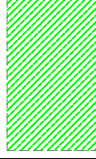




## LEGEND

	800mm clear space in front of windows
	1500mm turning circle
	1200mm clear space adjacent to bed
	1200mm clear on two sides of dining table
	Future line of sight from bedroom to WC

### NOTES

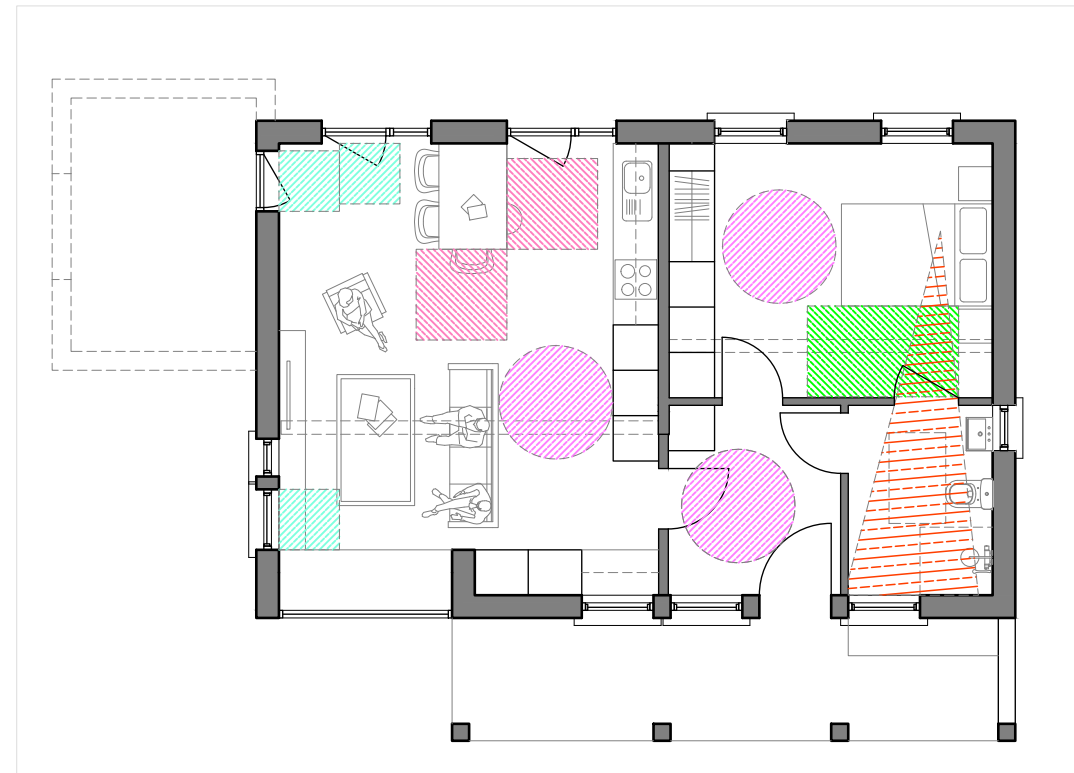
1-Bed and 3-Bed units have ground floor bedrooms and have therefore been designed so that they can be simply converted following age-in-place principles

Universal Design standards are based on the:

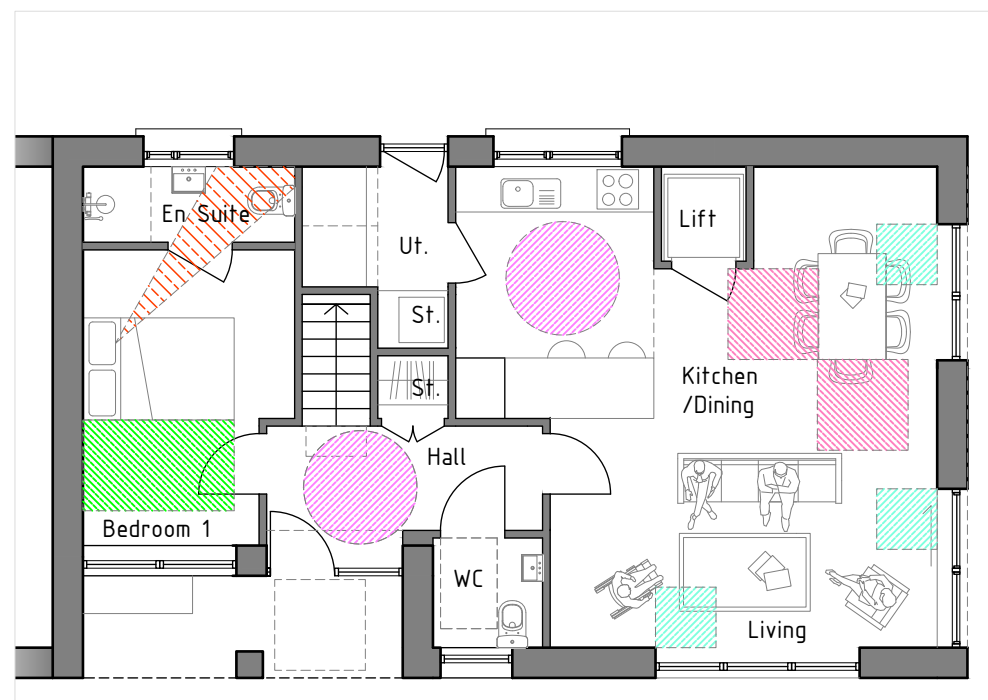
*'Centre of Excellence in Universal Design - Universal Guidelines for Homes in Ireland'*

En Suites created off Bedrooms

3-Bed: Simple conversion for passenger lift. Structural 'soft spot' created in first floor to store above



**2** 1-BED FLOOR PLAN-ADAPTED  
1:100@A3



**1** 3-BED FLOOR PLAN-ADAPTED  
1:100@A3